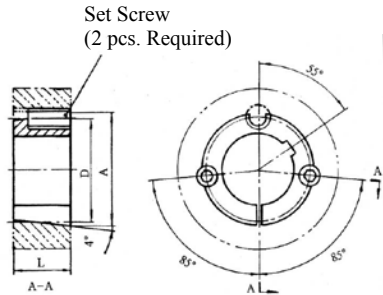
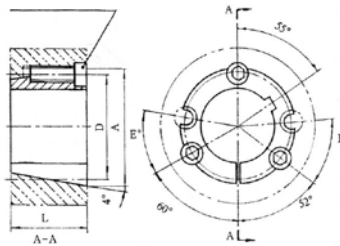


TB Bushings



Socket Head
Cap Screws (3 pcs. Required)



TB Bushing Dimensions				Set Screws
Bushing	L	A	D	Dia. x Length
1008	7/8	1.386	1 21/64	1/4-20 x 1/2
1108	7/8	1.511	1 29/64	1/4-20 x 1/2
1210	1	1.875	1 3/4	3/8-16 x 5/8
1215	1 1/2	1.875	1 3/4	3/8-16 x 5/8
1310	1	2.000	1 7/8	3/8-16 x 5/8
1610	1	2.250	2 1/8	3/8-16 x 5/8
1615	1 1/2	2.250	2 1/8	3/8-16 x 5/8
2012	1 1/4	2.750	2 5/8	7/16-14 x 7/8
2517	1 3/4	3.375	3 1/4	1/2-13 x 1
**2517-BSW	1 3/4	3.375	3 1/4	1/2-12 x 1
2525	2 1/2	3.375	3 1/4	1/2-13 x 1
3020	2	4.250	4	5/8-11 x 1 1/4
3030	3	4.250	4	5/8-11 x 1 1/4

TB Bushing Dimensions				Set Screws	
Bushing	L	A	D	Dia. x Length	E
3535	3 1/2	5	4.83	1/2-13 x 1 1/2	39°
**3535-BSW	3 1/2	5	4.83	1/2-12 x 1 1/2	39°
4040	4	5 3/4	5.54	5/8-11 x 1 3/4	40°
4545	4 1/2	6 3/8	6.13	3/4-10 x 2	40°
5050	5	7	6.72	7/8-9 x 2 1/4	37°

Bushing	Bore Range-inch	Key Seat- inch	Wt.
1008	1/2, 9/16	1/8 x 1/16	.27
	5/8, 11/16, 3/4, 13/16, 7/8	3/16 x 3/32	.21
	15/16, 1	1/4 x 1/16 *	.16
1108	1/2, 9/16	1/8 x 1/16	.33
	5/8, 11/16, 3/4, 13/16, 7/8	3/16 x 3/32	.27
	15/16, 1	1/4 x 1/8	.22
	1 1/16, 1 1/8	1/4 x 1/16*	.17
1210	1/2, 9/16	1/8 x 1/16	.61
	5/8, 11/16, 3/4, 13/16, 7/8	3/16 x 3/32	.55
	15/16, 1, 1 1/16, 1 1/8, 1 3/16, 1 1/4	1/4 x 1/8	.49
1215	1/2, 9/16	1/8 x 1/16	.80
	5/8, 11/16, 3/4, 13/16, 7/8	3/16 x 3/32	.70
	15/16, 1, 1 1/16, 1 1/8, 1 3/16, 1 1/4	1/4 x 1/8	.60
1310	1/2, 9/16	1/8 x 1/16	.70
	5/8, 11/16, 3/4, 13/16, 7/8	3/16 x 3/32	.70
	15/16, 1, 1 1/16, 1 1/8, 1 3/16, 1 1/4	1/4 x 1/8	.60
	1 5/16, 1 3/8	5/16 x 5/32	.60
1610	1/2, 9/16	1/8 x 1/16	.90
	5/8, 11/16, 3/4, 13/16, 7/8	3/16 x 3/32	.80
	15/16, 1, 1 1/16, 1 1/8, 1 3/16, 1 1/4	1/4 x 1/8	.70
	1 5/16, 1 3/8	5/16 x 5/32	.70
	1 7/16, 1 1/2	3/8 x 3/16	.70
	1 9/16, 1 5/8	3/8 x 1/8*	.70
1615	1/2, 9/16	1/8 x 1/16	1.20
	5/8, 11/16, 3/4, 13/16, 7/8	3/16 x 3/32	1.20
	15/16, 1, 1 1/16, 1 1/8, 1 3/16, 1 1/4	1/4 x 1/8	1.20
	1 5/16, 1 3/8	5/16 x 5/32	1.20
	1 7/16, 1 1/2	3/8 x 3/16	.80
	1 9/16, 1 5/8	3/8 x 1/8*	.70
2012	1/2, 9/16	1/8 x 1/16	1.60
	5/8, 11/16, 3/4, 13/16, 7/8	3/16 x 3/32	1.50
	15/16, 1, 1 1/16, 1 1/8, 1 3/16, 1 1/4	1/4 x 1/8	1.50
	1 5/16, 1 3/8	5/16 x 5/32	1.40
	1 7/16, 1 1/2	3/8 x 3/16	1.20
	1 13/16, 1 7/8	1/2 x 1/4	1.20
	1 15/16, 2	1/2 x 3/16*	1.00

Bushing	Bore Range-inch	Key Seat- inch	Wt.
2517	1/2	1/8 x 1/16	3.50
&	5/8, 11/16, 3/4, 13/16, 7/8	3/16 x 3/32	3.30
**2517-BSW	15/16, 1, 1 1/16, 1 1/8, 1 3/16, 1 1/4	1/4 x 1/8	3.30
	1 5/16, 1 3/8	5/16 x 5/32	3.20
	1 7/16, 1 1/2, 1 9/16, 1 5/8, 1 11/16, 1 3/4	3/8 x 3/16	3.00
	1 13/16, 1 7/8, 1 15/16, 2, 2 1/16, 2 1/8, 2 3/16, 2 1/4	1/2 x 1/4	2.40
	2 5/16, 2 3/8, 2 7/16, 2 1/2	5/8 x 3/16*	1.90
2525	3/4, 7/8	3/16 x 3/32	4.70
	15/16, 1, 1 1/16, 1 1/8, 1 3/16, 1 1/4	1/4 x 1/8	4.70
	1 5/16, 1 3/8	5/16 x 5/32	4.50
	1 7/16, 1 1/2, 1 9/16, 1 5/8, 1 11/16, 1 3/4	3/8 x 3/16	4.20
	1 13/16, 1 7/8, 1 15/16, 2, 2 1/16, 2 3/16, 2 1/4	1/2 x 1/4	3.00
	2 5/16, 2 3/8, 2 7/16, 2 1/2	5/8 x 3/16*	2.50
3020	13/16	3/16 x 3/32	5.30
	15/16, 1, 1 1/8, 1 3/16, 1 1/4	1/4 x 1/8	6.50
	1 5/16, 1 3/8	5/16 x 5/32	6.30
	1 7/16, 1 1/2, 1 9/16, 1 5/8, 1 11/16, 1 3/4	3/8 x 3/16	5.80
	1 7/8, 1 15/16, 2, 2 1/16, 2 1/8, 2 3/16, 2 1/4	1/2 x 1/4	5.30
	2 5/16, 2 3/8, 2 7/16, 2 1/2, 2 5/8, 2 11/16, 2 3/4	5/8 x 5/16	4.50
	2 7/8, 2 15/16, 3	3/4 x 1/4*	3.80
3030	13/16	3/16 x 3/32	7.60
	15/16, 1, 1 1/16, 1 1/8, 1 3/16, 1 1/4	1/4 x 1/8	9.20
	1 5/16, 1 3/8	5/16 x 5/32	8.90
	1 7/16, 1 1/2, 1 9/16, 1 5/8, 1 11/16, 1 3/4	3/8 x 3/16	8.60
	1 13/16, 1 7/8, 1 15/16, 2, 2 1/16	1/2 x 1/4	7.60
	2 1/8, 2 3/16, 2 1/4	1/2 x 1/4	7.60
	2 5/16, 2 3/8, 2 7/16, 2 1/2	5/8 x 5/16	6.20
	2 5/8, 2 11/16, 2 3/4	5/8 x 5/16	6.20
	2 7/8, 2 15/16, 3	3/4 x 1/4*	5.00
3535	1 3/16, 1 1/4	1/4 x 1/8	14.00
&	1 3/8	5/16 x 5/32	14.00
**3535-BSW	1 7/16, 1 1/2, 1 5/8, 1 11/16, 1 3/4	3/8 x 3/16	14.00
	1 7/8, 1 15/16, 2, 2 1/8, 2 3/16, 2 1/4	1/2 x 1/4	13.00
	2 5/16, 2 3/8, 2 7/16, 2 1/2, 2 5/8, 2 11/16, 2 3/4	5/8 x 5/16	12.00
	2 7/8, 2 15/16, 3, 3 1/8, 3 3/16, 3 1/4	3/4 x 3/8	10.00
	3 5/16, 3 3/8, 3 7/16, 3 1/2	7/8 x 1/4*	8.50
4040	1 7/16, 1 1/2, 1 5/8, 1 11/16, 1 3/4	3/8 x 3/16	22.00
	1 7/8, 1 15/16, 2, 2 1/8, 2 3/16, 2 1/4	1/2 x 1/4	22.00
	2 3/8, 2 7/16, 2 1/2, 2 5/8, 2 11/16, 2 3/4	5/8 x 5/16	22.00
	2 7/8, 2 15/16, 3, 3 1/8, 3 3/16, 3 1/4	3/4 x 3/8	17.00
	3 3/8, 3 7/16, 3 1/2, 3 11/16, 3 3/4	7/8 x 7/16	15.00
	3 7/8, 3 15/16, 4	1 x 1/4*	12.50
4545	1 15/16, 2, 2 3/16	1/2 x 1/4	30.00
	2 3/8, 2 7/16, 2 5/8, 2 3/4	5/8 x 5/16	30.00
	2 7/8, 2 15/16, 3, 3 1/8, 3 3/16, 3 1/4	3/4 x 3/8	30.00
	3 3/8, 3 7/16, 3 1/2, 3 5/8, 3 3/4	7/8 x 7/16	22.00
	3 7/8, 3 15/16, 4, 4 1/8, 4 3/16, 4 1/4	1 x 1/2	18.00
	4 3/8, 4 7/16, 4 1/2	1 x 1/4*	16.00
5050	2 7/16	5/8 x 5/16	38.00
	2 15/16	3/4 x 3/8	38.00
	3 3/8, 3 7/16, 3 5/8	7/8 x 7/16	38.00
	3 7/8, 3 15/16, 4, 4 1/4, 4 3/8, 4 7/16, 4 1/2	1 x 1/2	27.00
	4 7/8, 4 15/16, 5	1 1/4 x 7/16*	21.50

All sizes made out of **Cast Iron**.

** These bushings are only to be used with metric sheaves.

* Shallow Keyseat - Keystock supplied with bushing † Oversize Key

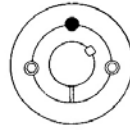
Note: A rectangular key is supplied with bushings that have shallow keyseats. This key will fit the standard depth keyseat on the shaft and the shallow keyseat on the bushing. Ordering Example: (1008-1/2) or (3535-BSW-2.15/16)

TB Bushings

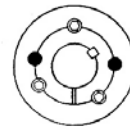
Bushing	Bore Range-mm	Keyway-mm	Wt.
1008	14, 16	5 x 2.3	.27
	18, 19, 20, 22	6 x 2.8	.27
	24, 25	8 x 2.3	.27
1108	14, 16	5 x 2.3	.33
	18, 19, 20, 22	6 x 2.8	.33
	24, 25, 28	8 x 3.3	.33
1210	14, 16	5 x 2.3	.61
	18, 19, 20, 22	6 x 2.8	.61
	24, 25, 28, 30	8 x 3.3	.61
	32	10 x 3.3	.61
1215	14, 16	5 x 2.3	.80
	18, 19, 20, 22	6 x 2.8	.80
	24, 25, 28, 30	8 x 3.3	.80
	32	10 x 3.3	.80
1310	14, 16	5 x 2.3	.70
	18, 19, 20, 22	6 x 2.8	.70
	24, 25, 28, 30	8 x 3.3	.70
	32, 35	10 x 3.3	.70
1610	14, 16	5 x 2.3	.90
	18, 19, 20, 22	6 x 2.8	.90
	24, 25, 28, 30	8 x 3.3	.90
	32, 35, 38	10 x 3.3	.90
	40, 42	12 x 3.3	.90
1615	14, 16	5 x 2.3	1.20
	18, 19, 20, 22	6 x 2.8	1.20
	24, 25, 28, 30	8 x 3.3	1.20
	32, 35, 38	10 x 3.3	1.20
2012	40, 42	12 x 3.3	1.20
	18, 19, 20, 22	6 x 2.8	1.70
	24, 25, 28, 30	8 x 3.3	1.70
	32, 35, 38	10 x 3.3	1.70
2517 & **2517-BSW	40, 42	12 x 3.3	1.70
	45, 48, 50	14 x 3.8	1.70
	20, 22	6 x 2.8	3.50
	24, 25, 28, 30	8 x 3.3	3.50
	32, 35, 38	10 x 3.3	3.50
3020 and 3030	40, 42	12 x 3.3	3.50
	45, 48, 50	14 x 3.8	3.50
	55	16 x 4.3	2.05
	60, 65	18 x 4.4	1.75
	70, 75	20 x 4.9	6.50
	80, 85	22 x 5.4	6.50
	90	25 x 5.4	6.50
3535 & **3535-BSW	40, 42	12 x 3.3	6.50
	45, 48, 50	14 x 3.8	6.50
	55	16 x 4.3	6.50
	60, 65	18 x 4.4	6.50
	70, 75	20 x 4.9	6.50
	80, 85	22 x 5.4	6.50
	90	25 x 5.4	6.50
4040	40, 42	12 x 3.3	14.00
	45, 48, 50	14 x 3.8	14.00
	55	16 x 4.3	14.00
	60, 65	18 x 4.4	14.00
	70, 75	20 x 4.9	14.00
	80, 85	22 x 5.4	14.00
	90, 95	25 x 5.4	14.00
	100	28 x 6.4	14.00
4545	40, 42	12 x 3.3	22.00
	45, 48, 50	14 x 3.8	22.00
	55	16 x 4.3	22.00
	60, 65	18 x 4.4	22.00
	70, 75	20 x 4.9	22.00
5050	80, 85	22 x 5.4	22.00
	90, 95	25 x 5.4	22.00
	100, 105, 110	28 x 6.4	22.00
	60, 65	18 x 4.4	30.00
	70, 75	20 x 4.9	30.00
5050	80, 85	22 x 5.4	30.00
	90, 95	25 x 5.4	30.00
	100, 105, 110	28 x 6.4	30.00
	115, 120, 125	32 x 7.4	30.00

** These bushings are only to be used with metric sheaves

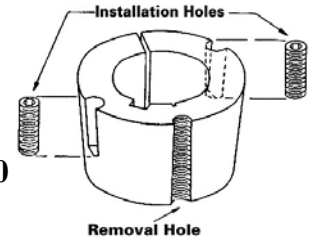
TB BUSHINGS INSTALLATION




1008 to 3030



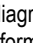
3535 to 5050



INSTALLATION

1. Properly clean shaft, bore and taper surface of bushing. Remove or degrease any oil, paint or dirt.
2. Install the bushing into the pulley hub. Be sure to match the hole pattern, not the threaded holes. Match the half threaded holes with the half straight holes (a complete hole will be threaded on one side only.)
3. Lightly oil the set screws (1008 to 3030) or the cap screws (3525 to 5050), be sure to oil under the cap screw head. Install the screws into the holes that are threaded on the hub side (shown as  in diagram). DO NOT LUBRICATE THE BUSHING TAPER OR BORE. BREAKAGE OF PRODUCT MAY OCCUR.
4. Fit the pulley with the bushing onto the shaft and locate in the proper location. Install key into the keyway of the shaft and bushing.
5. Tighten screws alternately and gradually in accordance with the torques listed on the Recommended Wrench Torque chart.
6. Using a hammer with a block or sleeve (do not hit bushing directly with hammer) tap on large end of the bushing and re-tighten screws per the appropriate Wrench Torque Values.
7. Fill screw heads with grease to eliminate dirt build up.

REMOVAL

1. Remove all screws and lightly oil the point and threads. Oil under cap screws if used.
2. Install screws into the holes that are threaded only on the bushing side (shown as  in diagram).
3. Tighten screws uniformly and alternately until the bushing is loose from in the hub and pulley is free from the shaft. Tap on small end of bushing to assist removal if it does not loosen. Note: One screw is not used for removal.

Recommended Wrench Torque			
Bushing #	Lb-In	Nm ²	Set Screw Hex Size
1008, 1108	53	6	1/8"
1210, 1215	176	20	3/16"
1310	176	20	3/16"
1610, 1615	176	20	3/16"
2012	273	31	7/32"
2517-BSW	422	48	6mm
2525	422	48	1/4"
3020, 3030	790	90	5/16"
3535-BSW	986	112	10mm
4040	1,670	190	1/2"
4545	2,380	270	5/8"
5050	3,080	350	3/4"

Ordering Example: (1008-14MM) or (3535-BSW-50MM)